

EAGLE

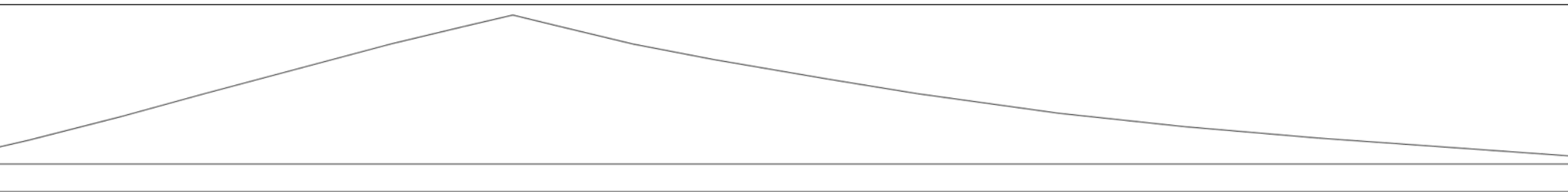
By Jack

03/05/2008



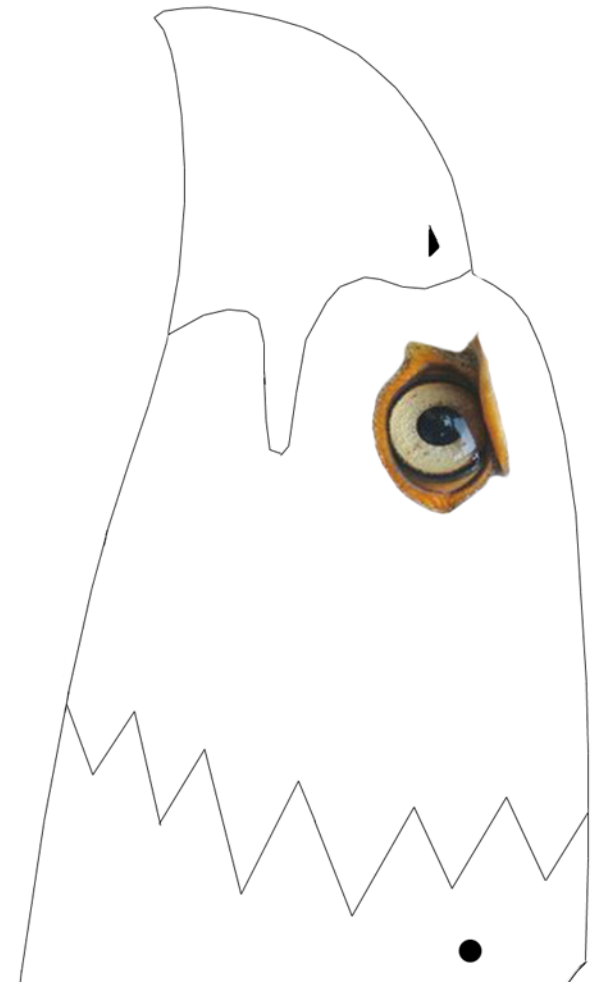
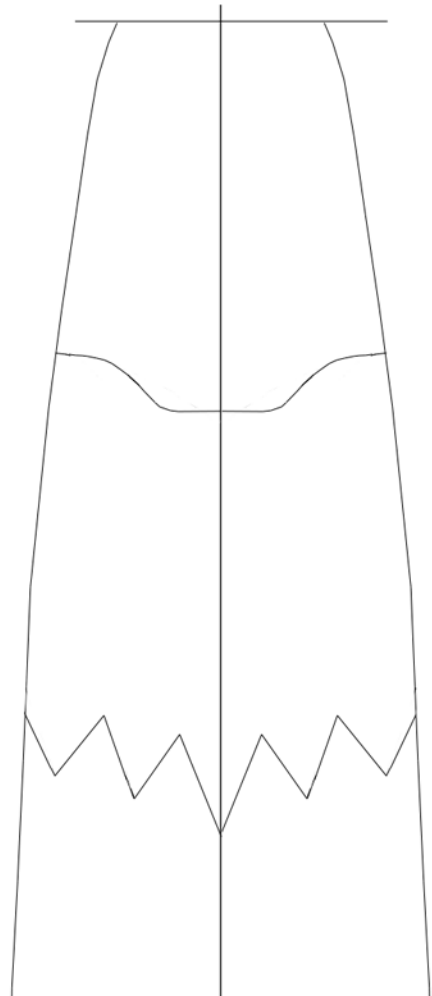
Tail 122°

4mm or laminate 2 pieces of 3mm



Ma
Top

***in wing
section***





Top hatch
Trim to fit

Winglet

More plans here

<http://blog.yam.com/jacoda88>

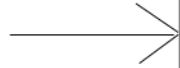
Wing spar goes here

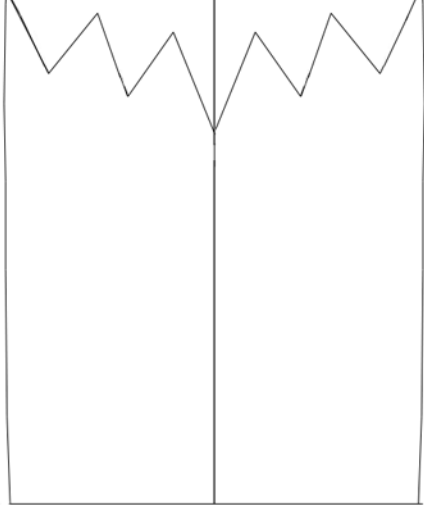


***Bottom
Fuselage***

Side panel

CG

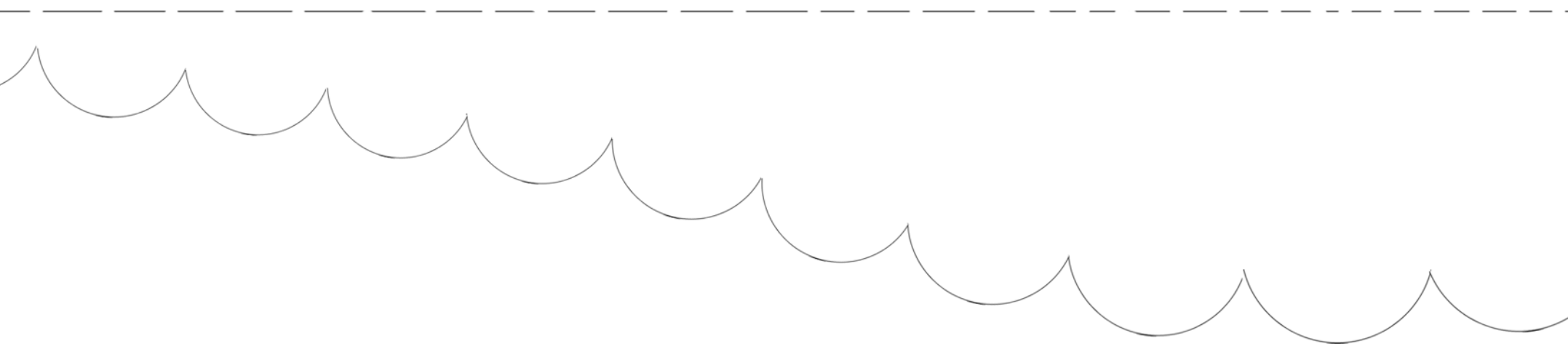




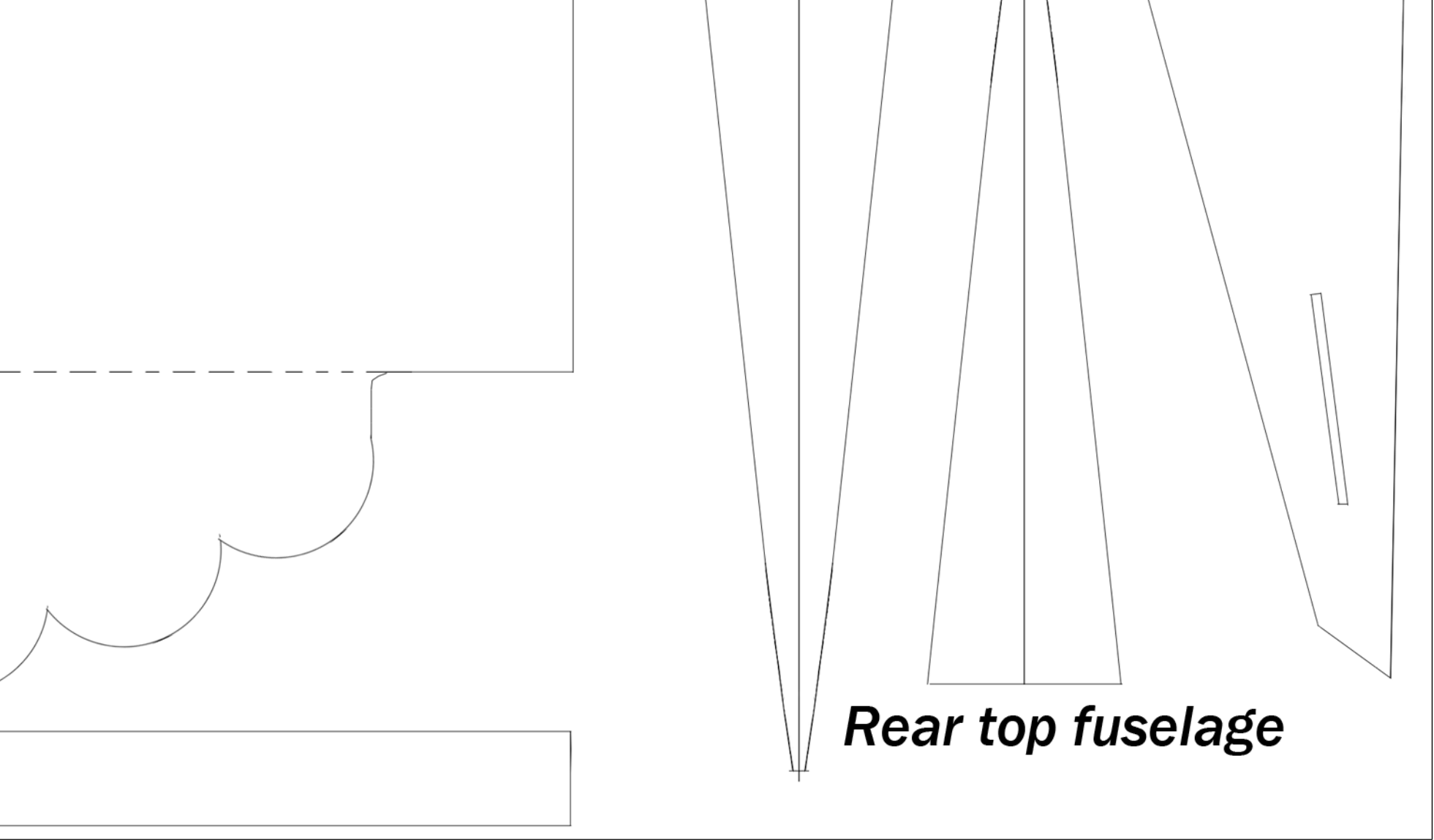
***All parts are 3mm depron
except for the wing spar
and tail***

***CG is approx 3cm-4cm
from the leading edge of wing***





Wing spar 6mm



Rear top fuselage